

SB25, SB60s, SB221s, SB265

()

10
 200
 1 000
 500
 500
 1500
 2 000V
 1500
 1
 50 000
 10 000
 SB221s .116" (2.95) ; SB60s .094" (2.4) ; SB265 .213" (5.4) ; SB25 .195" (4.95)
 -10°C +70°C

(PBT) (AT414)

SB221s;
 SB25, SB60s SB265
 SB25 & SB60s; SB265

() : A " "



UL C-UL: UL & C-UL
 No. WOYR80.E44145. Z2. UL No. WOYR2.E44145; C-UL
 UL "UL" "/ -



CSA: CSA " SA" " CSA No. 023535-0-000
 "/ "

			() =			AC 125	AC 250
SB221NO	— —	Ⓢ	SPST	—	() 1-4	3A	1.5A
SB221NC	Ⓢ Ⓢ	Ⓢ	SPST	1-4	() —	3A	1.5A
*SB221TNO	— —	Ⓢ	SPST	—	() 1-4	3A	1.5A
*SB221TNC	Ⓢ Ⓢ	Ⓢ	SPST	1-4	() —	3A	1.5A

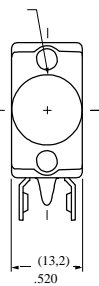
* T = SPST SB221NO SPST SB221NC



SB221NO

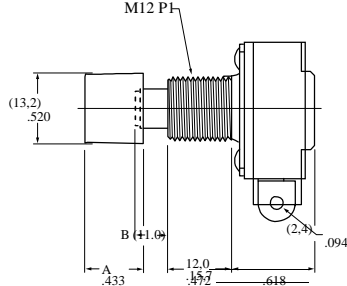
AT414

AT504M,



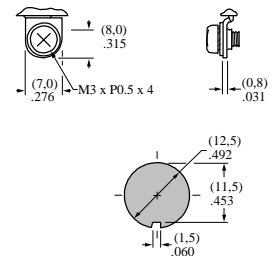
A: .185" (4.7)
 : .197" (5.0)

AT508,



.150" (3.8)
 .161" (4.1)

AT527M.

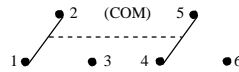


B
 0.193" (4.9)

				()	()	AC 125	AC 250
SB61A			DPD	2-3 5-6	()	10	5
SB61B			T	2-3 5-6	()	A	1,5
*SB63A			DPD	2-3 5-6	()	3A	A

* SB63A

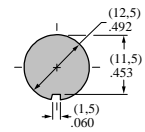
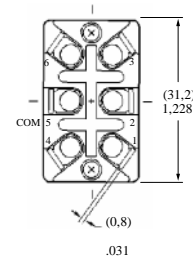
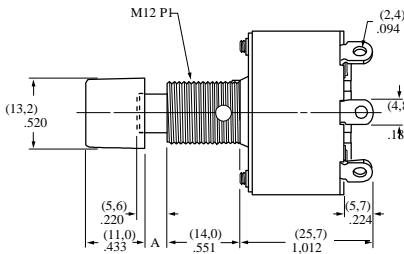
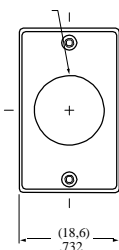
DPDT



AT504M,

AT508,

AT527M.



0.193" (4.9)

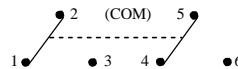
SB61A

AT414

A: .169" (4.3) SB61 .130" (3.3) SB63.

				()	()	AC 125	AC 250
SB25			DPDT	2-3 5-6	2-1 5-4	15A	9A

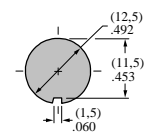
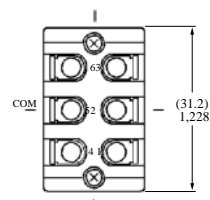
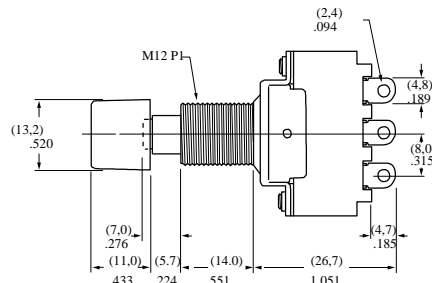
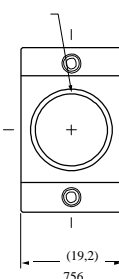
DPDT



AT504M,

AT508,

AT527M.

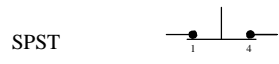


0.193" (4.9)

SB25

AT414

					AC 125	AC 250
SB265			SPST	1-4	6A	3A



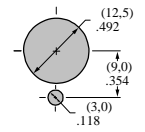
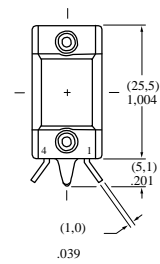
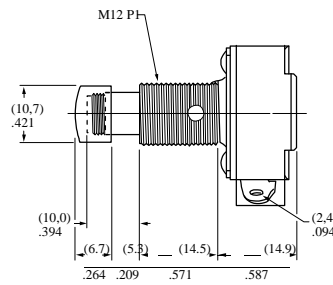
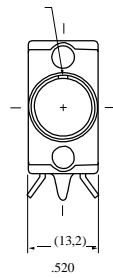
AT504M ,

AT508,

AT527M.



SB265



0.291" (7.4)